

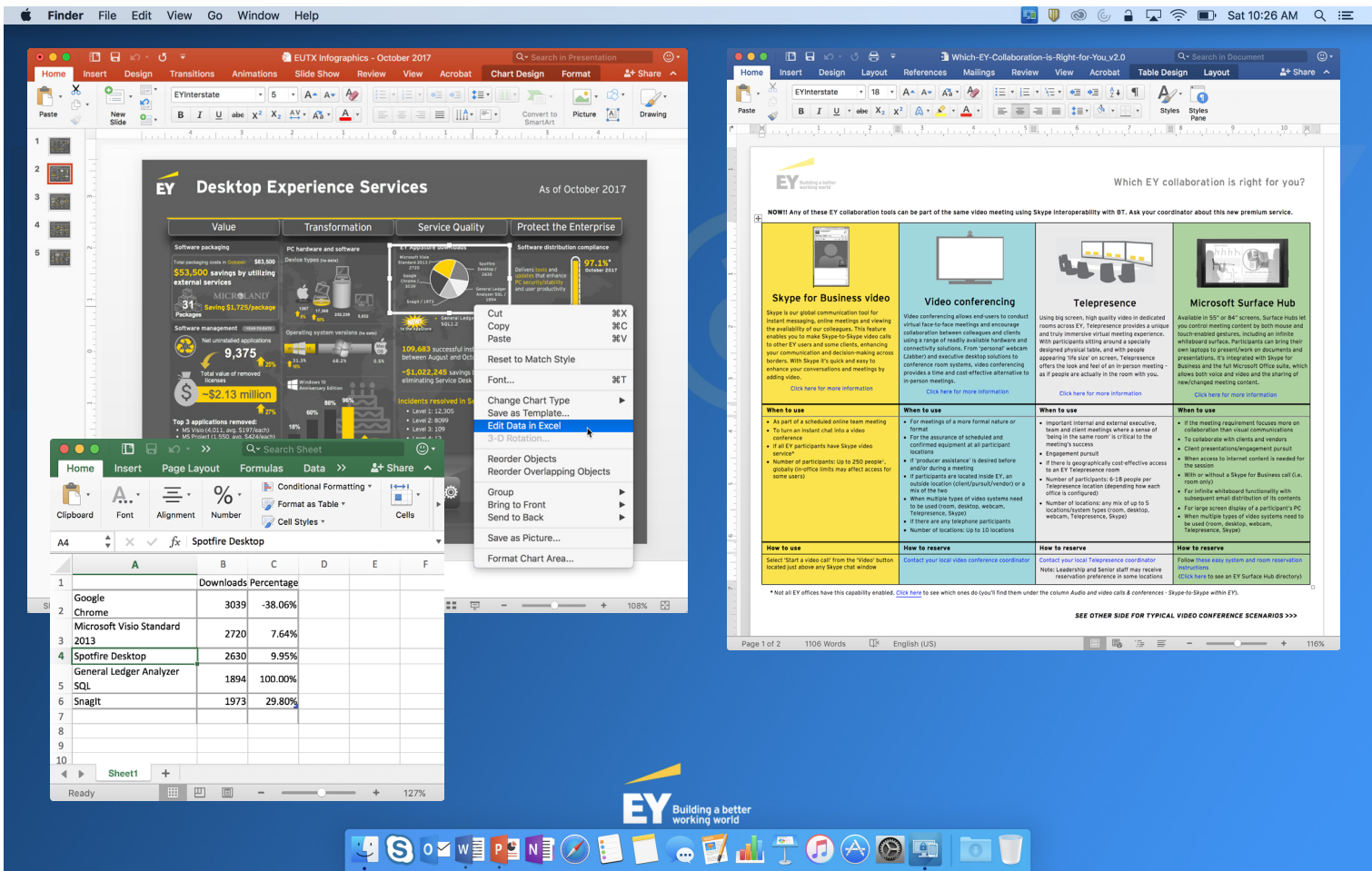


The Mac you love, the security your clients demand

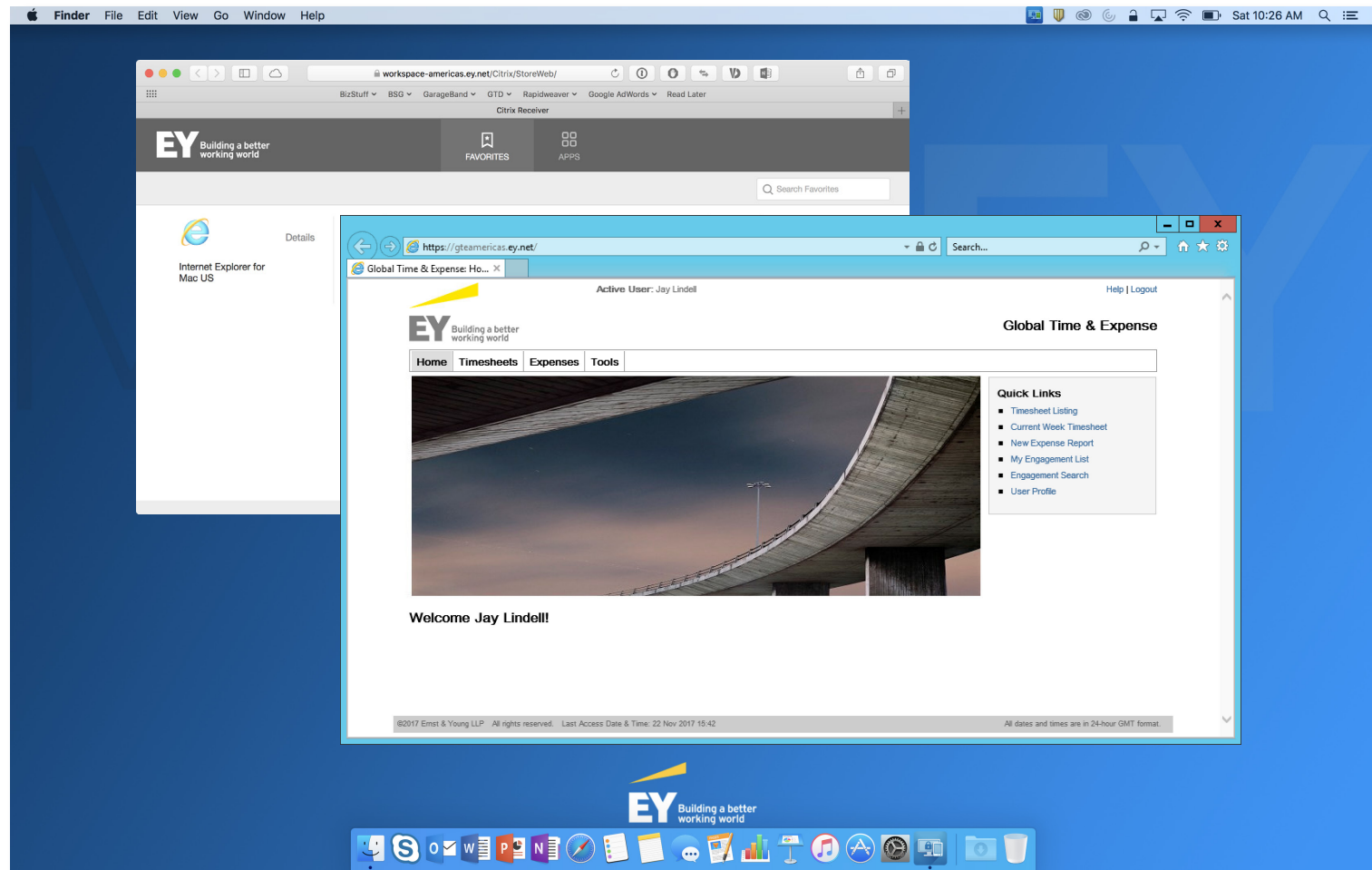
The next time you're due for a new EY laptop, you can select legendary Mac ease-of-use in an EY-approved and fully-supported laptop.*

Welcome to **Mac@EY**.

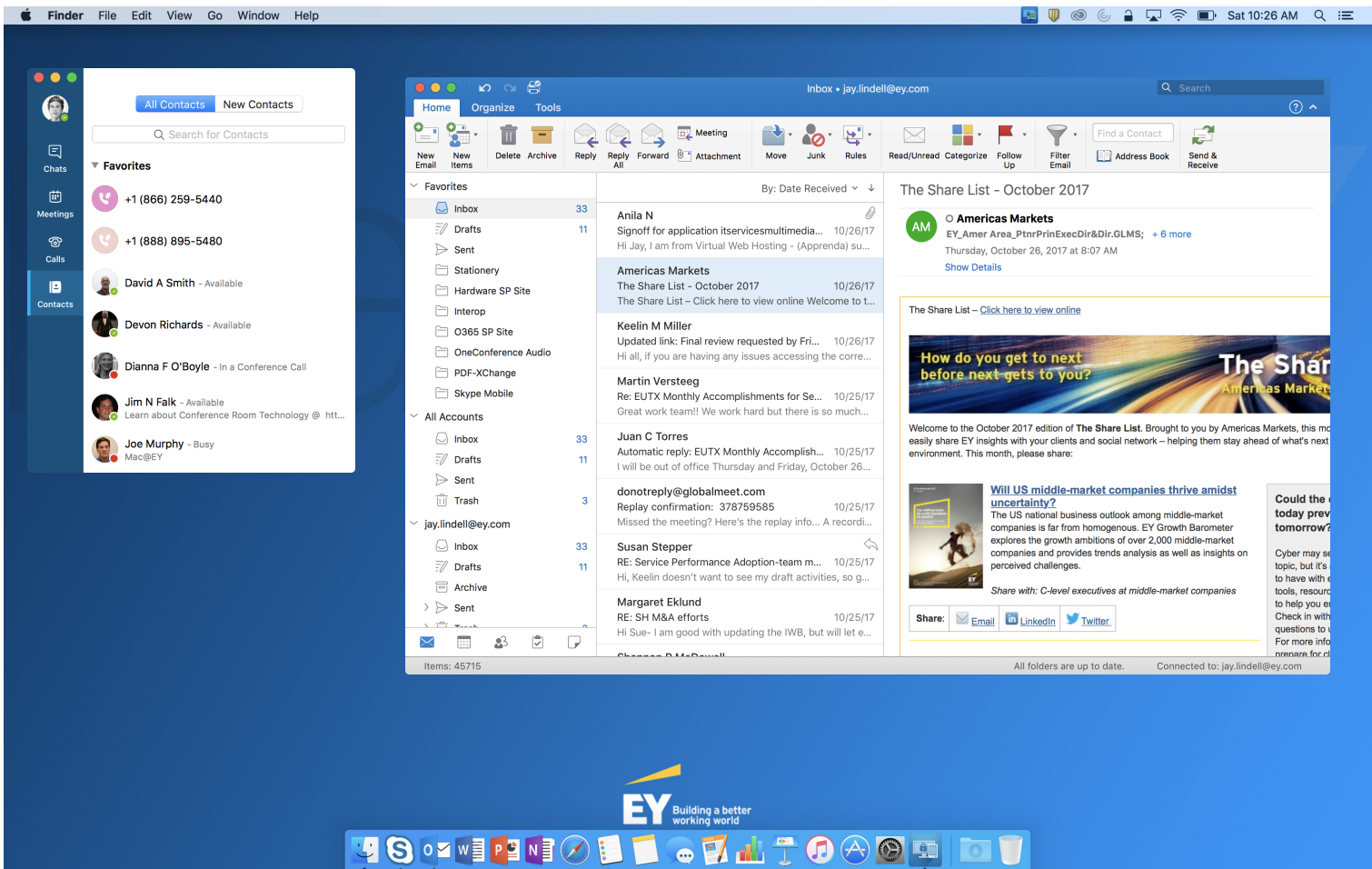
*The approval process is determined by each country



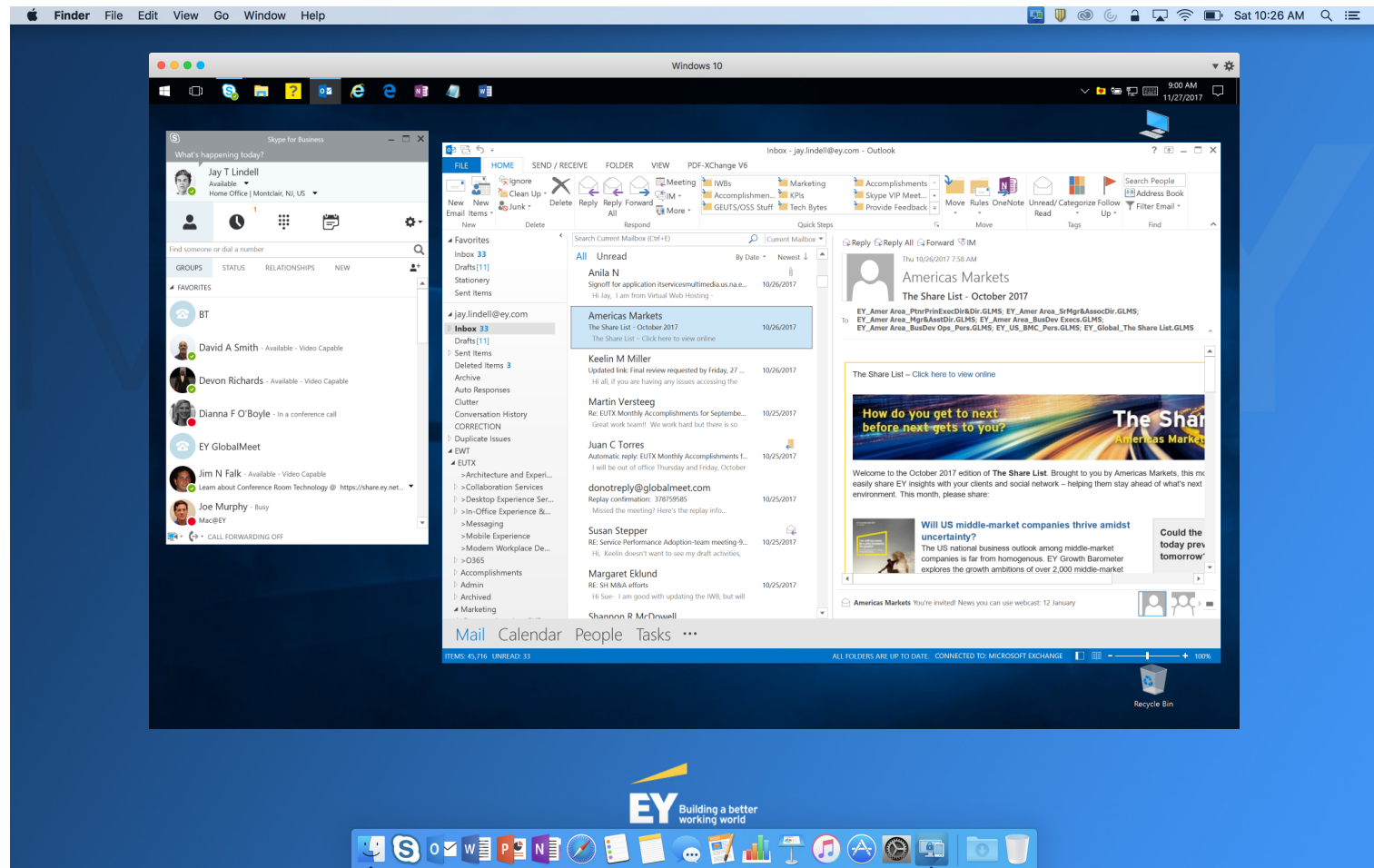
Microsoft Office



Citrix virtualized Windows Internet Explorer 11



Skype for Business and Outlook



EY OneDesk running virtually in Parallels (Mac@EY Pro only)

Mac@EY Models

Every Mac@EY laptop can be delivered to your door or office ready to set up without IT assistance. Just follow a few instructions that come in the box and all software and security will be installed automatically.

Mac@EY Light, built around the 13" MacBook Pro, is the primary Mac laptop. It has native versions of Microsoft Office, Skype for Business, EYRC and other tools. Citrix virtualization provides access to Internet Explorer 11 for accessing EY websites. It has a 10 hour battery and weighs 3 lbs (1.36 kg).



Mac@EY Traveler, built around the 12" MacBook, offers the same software, features and experience as Mac@EY Light (though slightly less powerful) for the EY road warrior. At just 2 lbs (.9 kg) and 1.3 mm thick, it is a lightweight, highly mobile solution with a 10 hour battery.

Mac@EY Pro, built around the 15" MacBook Pro, offers both a native Mac@EY experience and an EY Windows laptop experience. This is done by installing a virtual instance of the current EY OneDesk (Windows 10) loadset using a software program called Parallels. This provides access to all of the tools and systems that exist on a standard EY Windows PC. It has a 10 hour battery and weighs 4 lbs (1.8 kg).



Questions?

Contact **Joe Murphy**, the EY Apple Mac Service Owner, at joe.murphy1@EY.com